



GUIDE PRICE

£500,000

Palace Grove

Bromley, BR1 3HQ

PROPERTY SUMMARY

GUIDE PRICE £500,000 - £525,000 This three bedroom duplex maisonette is tastefully modernised, beautifully presented and is arranged over 1000 square feet. Situated on this sought after tree lined road being well positioned for Bromley North and South train stations as well as an abundance of shops, bars, restaurants and the Glades shopping mall. Further benefits include a delightful landscaped rear garden, double glazing, gas central heating and share of the freehold. EPC: D

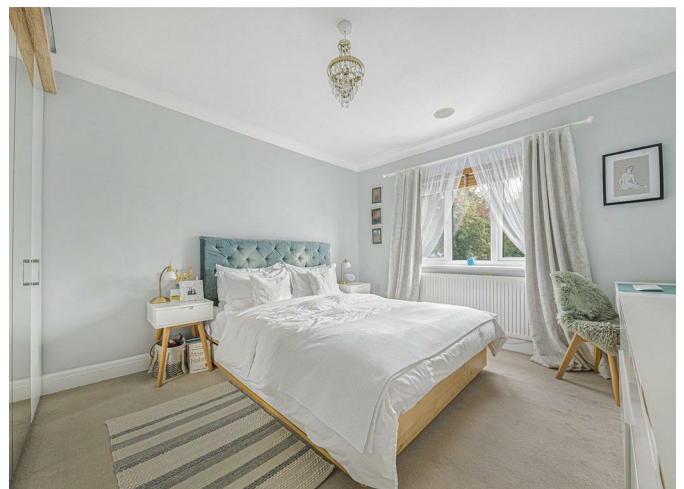
3



1



1

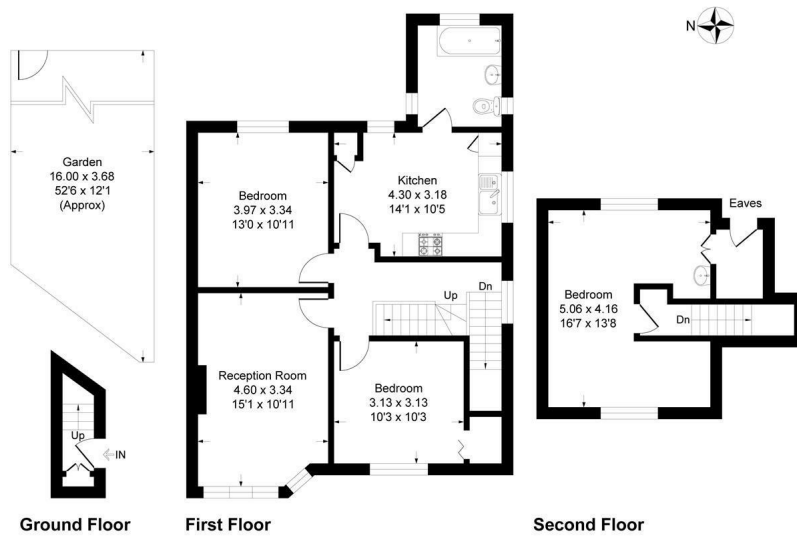




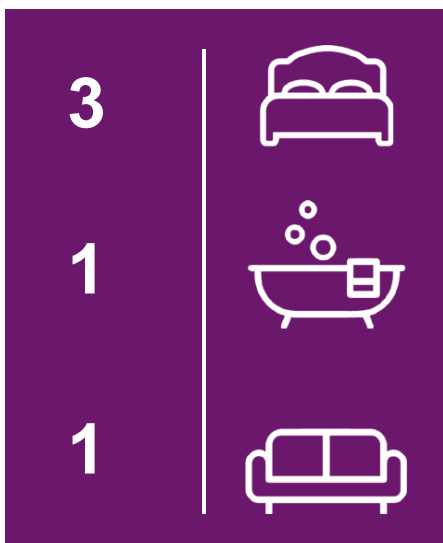


Palace Court, Palace Grove, BR1

Approximate Gross Internal Area 100.0 sq m / 1077 sq ft



This plan is for layout guidance only. Not drawn to scale unless stated. Windows and door openings are approximate. Whilst every care is taken in the preparation of this plan, please check all dimensions, shapes and compass bearings before making any decisions reliant upon them.
Produced By Planpix



Energy Efficiency Rating		
	Current	Potential
Very energy efficient - lower running costs		
(92 plus) A		
(81-91) B		
(69-80) C		
(55-68) D	68	74
(39-54) E		
(21-38) F		
(1-20) G		
Not energy efficient - higher running costs		
England & Wales		
	EU Directive 2002/91/EC	

EPC RATING: D COUNCIL TAX BAND: D

Agents Note: Whilst every care has been taken to prepare these particulars, they are for guidance purposes only. All measurements are approximate and are for general guidance purposes only and whilst every care has been taken to ensure their accuracy, they should not be relied upon and potential buyers/tenants are advised to recheck the measurements

Sinclair Hammelton

OFFICE ADDRESS

23 High Street
Bromley
Kent
BR1 1LG

OFFICE DETAILS

0208 464 5566
info@sinclairhammelton.co.uk